

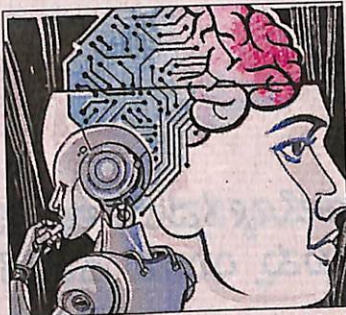
Demand for AI course increases at NITK

Kevin.Mendonsa
@timesofindia.com

Mangaluru: The Artificial Intelligence BTech engineering programme, introduced in 2021-22 at the National Institute of Technology Karnataka, Surathkal, has quickly risen to become the second most popular course at the institute. Launched three years ago, the AI course surpassed the demand of the IT and electronics & communication engineering (EC&C) programmes, which now hold the third and fourth positions, respectively.

In response to the increasing demand for AI, the department of information technology at NITK, initiated a new four-year BTech course in AI starting from the academic year 2021-22.

The programme has an intake of 44 seats, including Direct Admission of Students Abroad (DASA). Since its inception, the course gained significant popularity among admission seekers.



Ram Mohana Reddy Guddeti from the IT department explained that the institute introduced the BTech in AI under the IT department due to the growing demand for automation across various industries. Since then, it has become one of the most sought-after courses, second only to computer science.

"We have a total of 44 seats and all of them are filled. The increase of seats is left to the institution heads," he said when asked about plans to increase seats in response

to the high demand.

The AI course was introduced in alignment with the National Education Policy 2020, which emphasises the need to enhance the skilled workforce in mathematics, computer science and data science, along with multidisciplinary skills encompassing the sciences, social sciences and humanities.

The programme focuses on utilising inputs such as video, speech and big data to make decisions or augment human capabilities.

According to the available cut-off details, under the home state quota, the opening rank was 2,836 and the closing rank was 3,505. For the female-only (including supernumerary) quota under HS, the opening rank was 3,948, and the closing rank was 4,490.

Under the other state quota, gender-neutral opened at rank 1,421 and closed at rank 2,216. Similarly, female-only (including supernumerary) opened and closed at rank 4,354.